



## 28f Westminster Way, Oxford, Oxfordshire, OX2 0LW

£1,400 PCM - 29th November 2025

- First floor
- Gas CH
- Council Tax B
- One bedroom
- Communal gardens
- EPC rating B
- Unfurnished
- Parking for 1 car
- Mains gas electricity and water

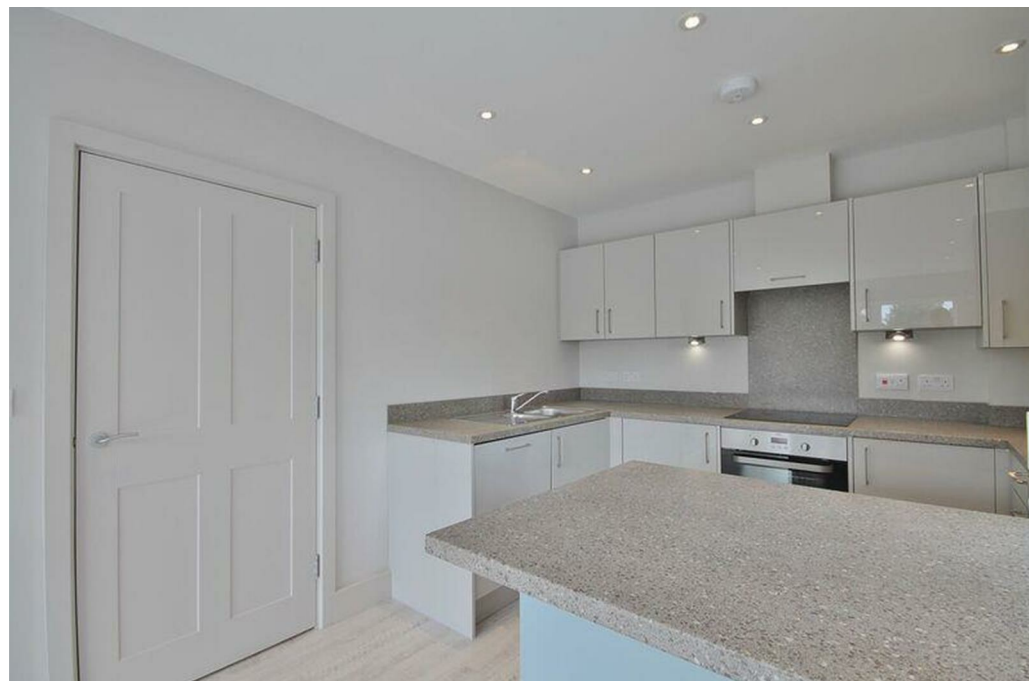
## 28f Westminster Way, Oxford OX2 0LW

A spacious one bedroom first floor apartment finished to a high standard. Easy access to Oxford City Centre. Unfurnished. Double Bedroom with fitted wardrobes. Shower room, Open plan style Living/Dining room/Kitchen, Gas CH, Communal garden. Parking for 1 car

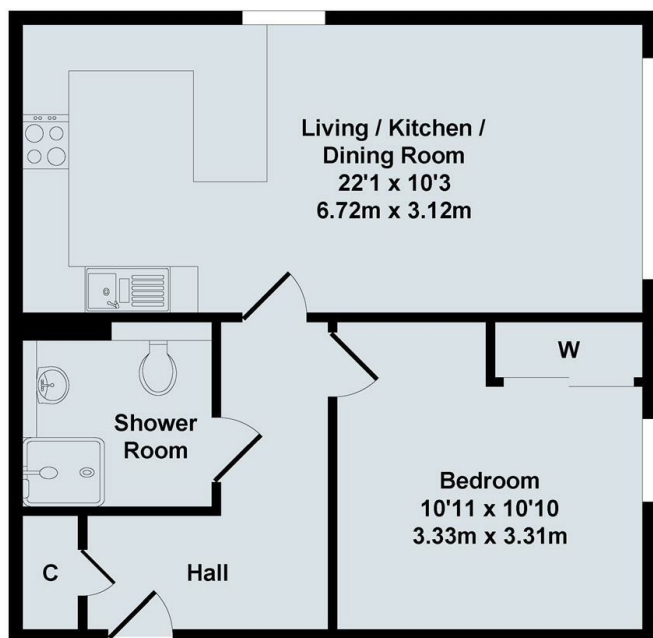
NOTE: PHOTOS TAKEN PRIOR TO CURRENT TENANCY



Council Tax Band: B



A spacious one bedroom first floor apartment finished to a high standard with walls and ceilings repainted throughout. Unfurnished. Easy access to Oxford City Centre. Double Bedroom with fitted wardrobes. Shower room, Open plan style Living/Dining room/Kitchen - fully fitted with oven, gas hob, fridge/freezer, dishwasher and washer/dryer, Gas central heating, Communal garden. NO PARKING



First Floor

Total Approx. Floor Area 474 Sq.Ft. (44.0 Sq.M.)  
All items illustrated on this plan are included in the "Total Approx Floor Area"

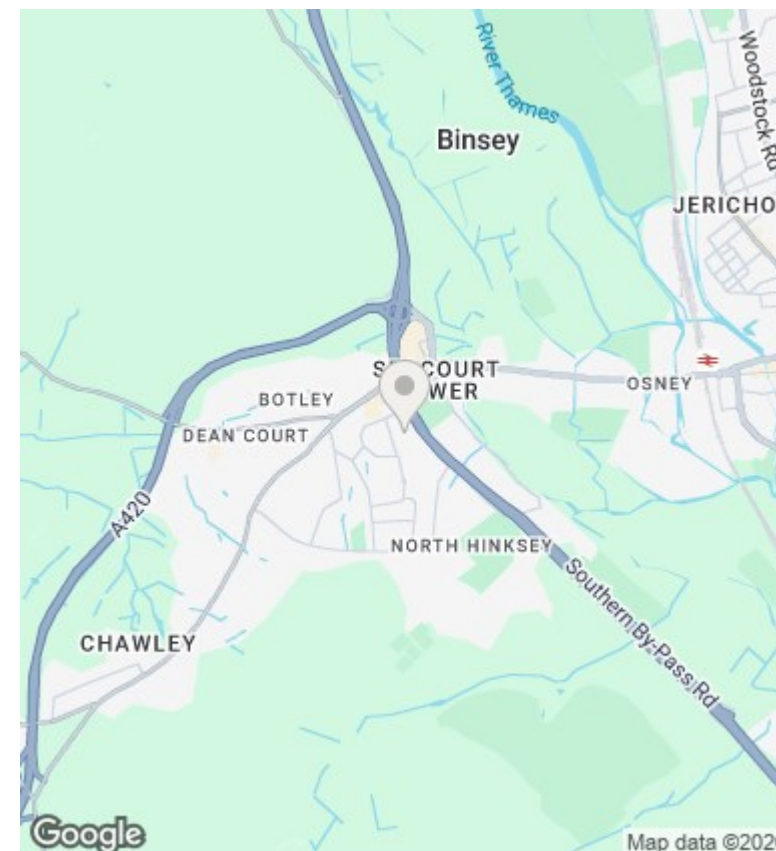
## Directions

## Viewings

Viewings by arrangement only. Call 01865 515900 to make an appointment.

## Council Tax Band

B



Energy Efficiency Rating		
	Current	Potential
Very energy efficient - lower running costs		
(92 plus) <b>A</b>		
(81-91) <b>B</b>	85	85
(69-80) <b>C</b>		
(55-68) <b>D</b>		
(39-54) <b>E</b>		
(21-38) <b>F</b>		
(1-20) <b>G</b>		
Not energy efficient - higher running costs		
EU Directive 2002/91/EC		
England & Wales		